

# WorldSpreads.com Online Trading Guide

[Logging In](#)  
[Choosing a Market](#)  
[Placing a Bet](#)  
[Managing Your Account](#)

## [Logging In](#)

When your account is opened we will notify you by email of your internet username and password. We strongly recommend you change your password on-line as soon as possible. (The password must be a minimum of 6 characters and must be a combination of alphabetic and numeric characters.)

If you wish, you may also change your username by calling our Customer Service Team on +44 20 7290 0555.

## [Choosing a Market](#)

Once you have logged in to the client area, you will see the following screen:

**WORLDSPREADS** LOG OUT

MY ACCOUNT...

HOME | TRADING TUTORIAL | MARKET INFORMATION | ACCOUNT MANAGEMENT | TRADE NOW | TALK TO A TRADER LIVE | COMPANY INFORMATION | RECOMMENDED LINKS | CONTACT US

PHONE:  
UK: 020 7291 9180  
World: +44 20 7291 9180  
Trading: +44 20 7290 0550  
EMAIL: enquiries@worldspreads.com

BENEFITS:  
Go Long or Short +  
No Commissions +  
No Stamp Duty +  
No Capital Gains Tax +  
No Currency Risk +  
Instant Execution +  
Trade in Small Sizes +  
Hedging Facilities +  
Extended Trading Hours +

Market	Quote	Daily Change	Stake	Trade	INFO	ADD
BP PLC - DEC 2005	642.2 - 645.2	+9.1		Trade	INFO	ADD
NYMEX LIGHT CRUDE - DEC	57.82 - 57.88	0.01		Trade	INFO	ADD
EURO BUND - DEC	120.11 - 120.14	-0.17		Trade	INFO	ADD
IMM GBPUSD - DEC	1.7187 - 1.7193	0.0021		Trade	INFO	ADD
FTSE - DAILY CASH - THU 17/1	5467 - 5489	+33		Trade	INFO	ADD
EURODOLLAR (INT RATE) - M	95.20 - 95.23	0.00		Trade	INFO	ADD
SAINSBURY - MAR 2006	292.0 - 293.8	-1.4		Trade	INFO	ADD
IMM EURUSD - DEC	1.1694 - 1.1700	0.0004		Trade	INFO	ADD

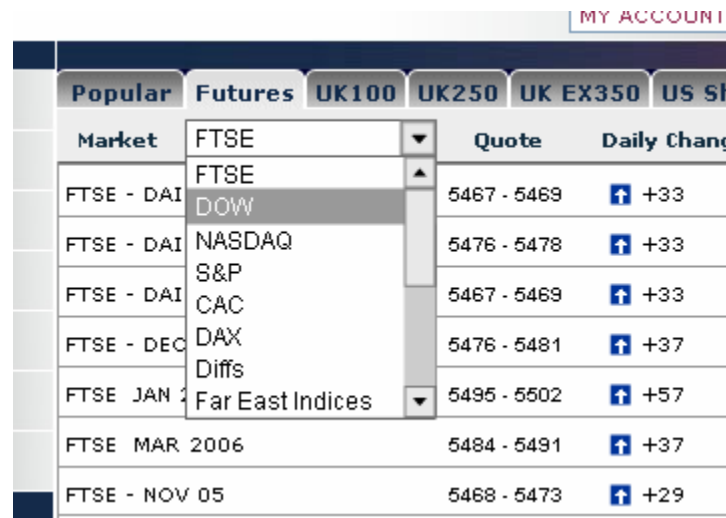
Account 991010 Total Position £ 25000

ALL PRICES SHOWN ABOVE ARE INDICATIVE

ABOUT WORLDSPREADS :: TERMS & CONDITIONS :: CONTACT US :: DISCLAIMER :: PRIVACY

You now have access to live trading quotes on the thousands of markets offered by WorldSpreads. Simply click on the various market tabs (Futures, UK 100, US Shares etc).

Where necessary you can then narrow down your selection by using the Market Drop-down:



Market	Quote	Daily Change
FTSE - DAI	5467 - 5469	↑ +33
FTSE - DAI	5476 - 5478	↑ +33
FTSE - DAI	5467 - 5469	↑ +33
FTSE - DEC	5476 - 5481	↑ +37
FTSE JAN	5495 - 5502	↑ +57
FTSE MAR 2006	5484 - 5491	↑ +37
FTSE - NOV 05	5468 - 5473	↑ +29

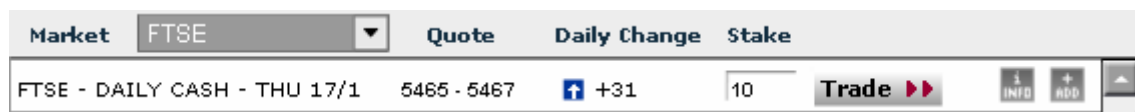
If you are unable to locate the market of your choice, you can use the Search tab on the right-hand side of the trading panel:




This facility will allow you to search for a market just by entering the first few characters of the market name.

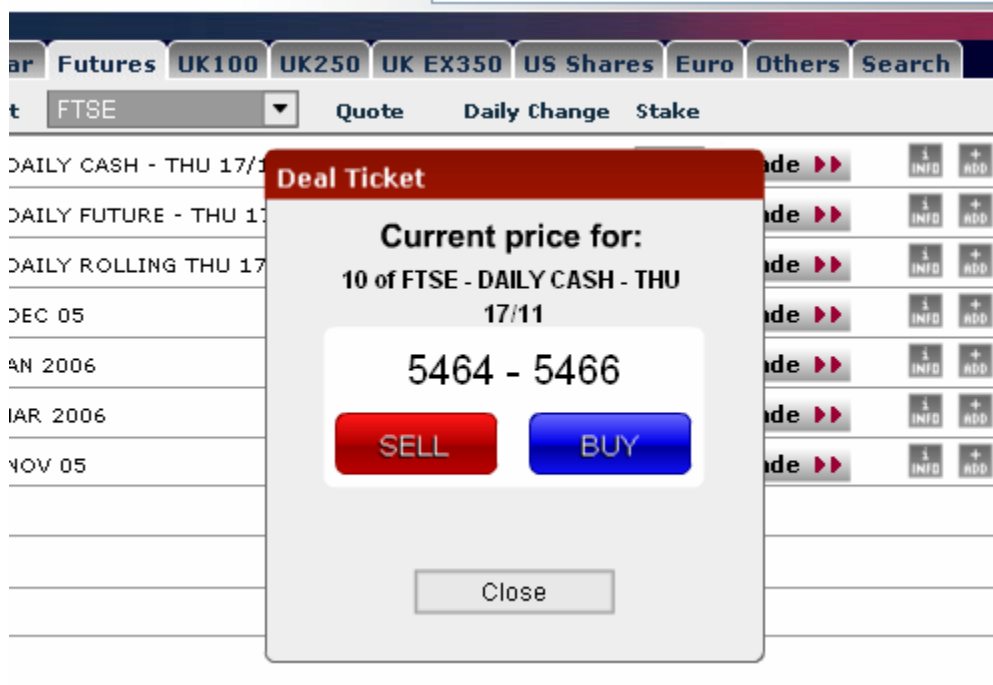
### Placing a Bet

Let us assume you wish to place a bet on the Daily FTSE Cash market. Enter your stake in the Stake Box. In this example we use a stake of £10 per point:

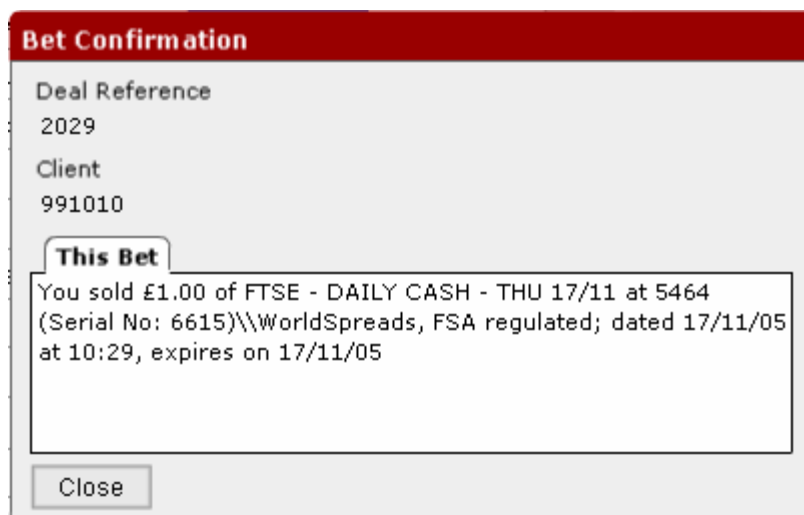


**HINT:** You can reveal in-depth details of the trading times, settlement basis, Initial Margin Requirement etc for any market by clicking on the  button next to each market.

Now simply click on the Trade button. This will immediately bring up the Deal Ticket for this market, which shows a streaming buy-sell quote:



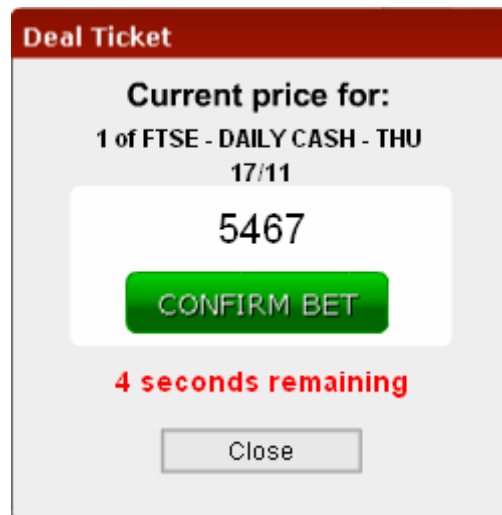
You are not yet obliged to place a bet at this stage. Once you wish to buy or sell, click on the buy or sell button. In this example, we will sell. If the trade is accepted by our system, your bet will be accepted and you will see a bet confirmation:



Occasionally, once you have clicked on buy or sell, your order may first be referred to a dealer, who will confirm the price at which you can deal:



Assuming your order to bet is not then rejected, you will quickly receive a final deal ticket. This will show a fixed price at which you can buy or sell, and the time you have to deal on this price:



Even at this stage you can still opt not to place the bet. However, clicking on Confirm will send us your instruction to deal and you will (subject to such considerations as your account being sufficiently funded) then see your bet confirmation.



### Trade History

Shows details of closed bets. You can also download a full history in Excel format.

### Account Summary

Here you can see the overall position of your account, including Account Balance, Initial Margin and your total open position profit or loss. For your convenience, the Total Position value is also displayed on the main trading screen at all times.

### Credit My Account

We are shortly introducing an online credit / debit card payments facility. Alternatively you can choose from a variety of other payment options as indicated in this section.

### Change Password

Change your log in password here.

---

[www.worldspreads.com](http://www.worldspreads.com)

---